

Madison, Wisconsin

CITY OF MADISON

CITY ENGINEERING DIVISION DEPARTMENT OF PUBLIC WORKS

PLAN OF PROPOSED IMPROVEMENT

SYCAMORE SANITARY SEWER INTERCEPTOR MAINTENANCE ACCESS - PHASE 1

CITY PROJECT NO. 10426/53W1848


CITY CONTRACT NO. 8250

PUBLIC IMPROVEMENT PROJECT
APPROVED


AUGUST 7, 2018

BY THE COMMON COUNCIL
OF MADISON, WISCONSIN

PUBLIC IMPROVEMENT DESIGN
APPROVED BY:

 8/7/18
City Engineer Date

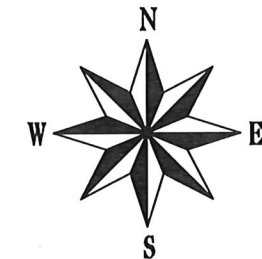
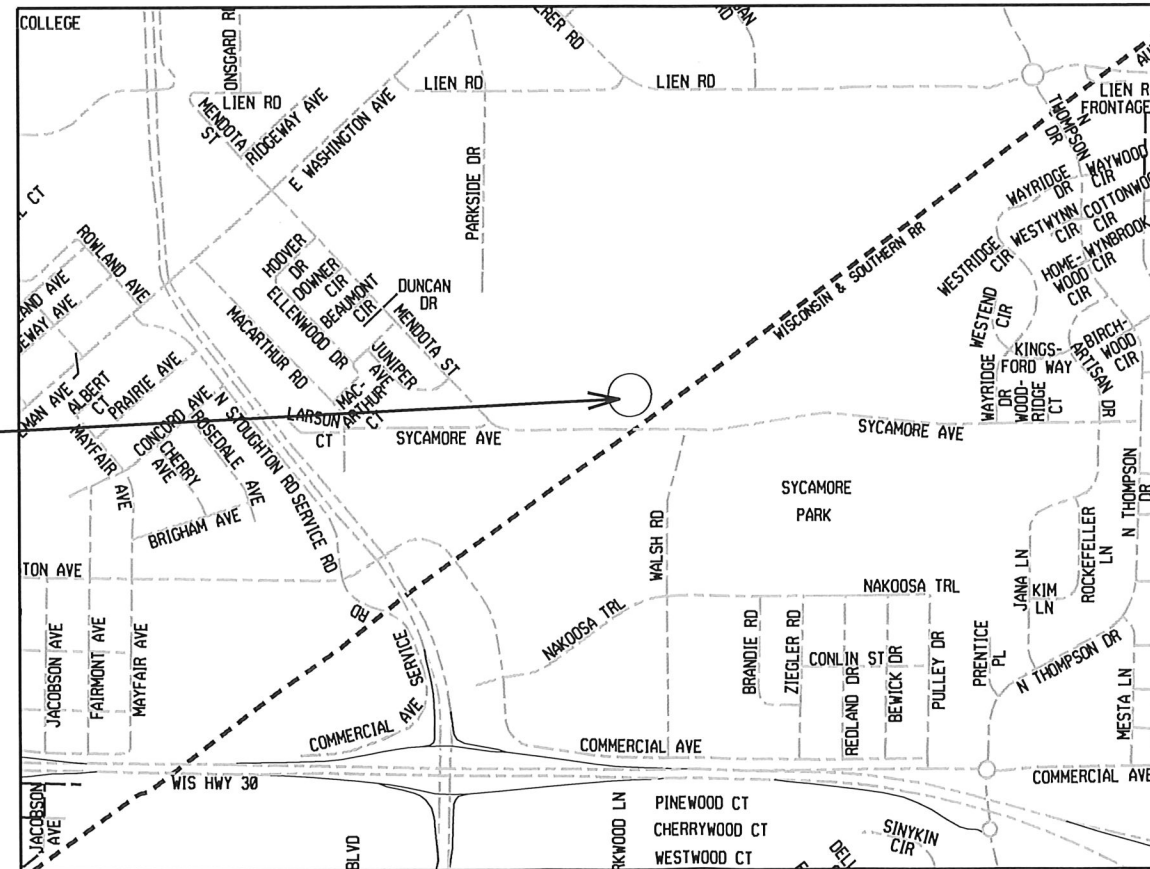
PROJECT DESIGN
APPROVED BY:


8-8-18

INDEX OF SHEETS

| | |
|-------------|-------------------------|
| SHEET NO. 1 | EROSION CONTROL PLAN |
| SHEET NO. 2 | PLAN SHEET |
| SHEET NO. 3 | PROFILE & CROSS SECTION |

PROJECT AREA

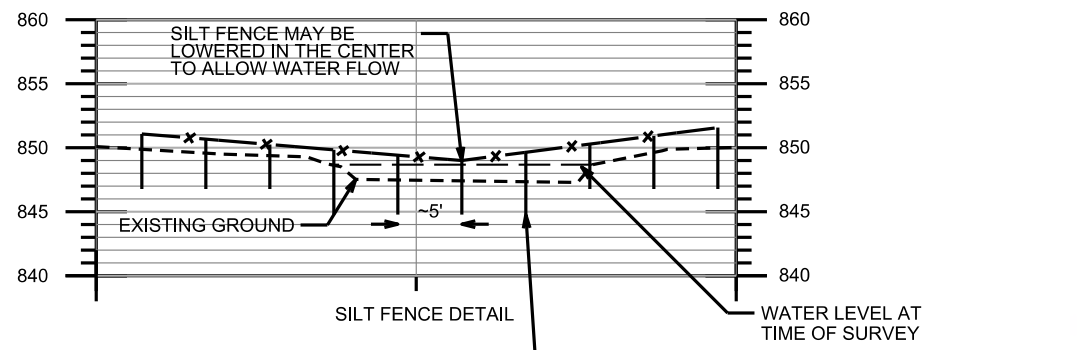


PLOT SCALE:

PLOT NAME:

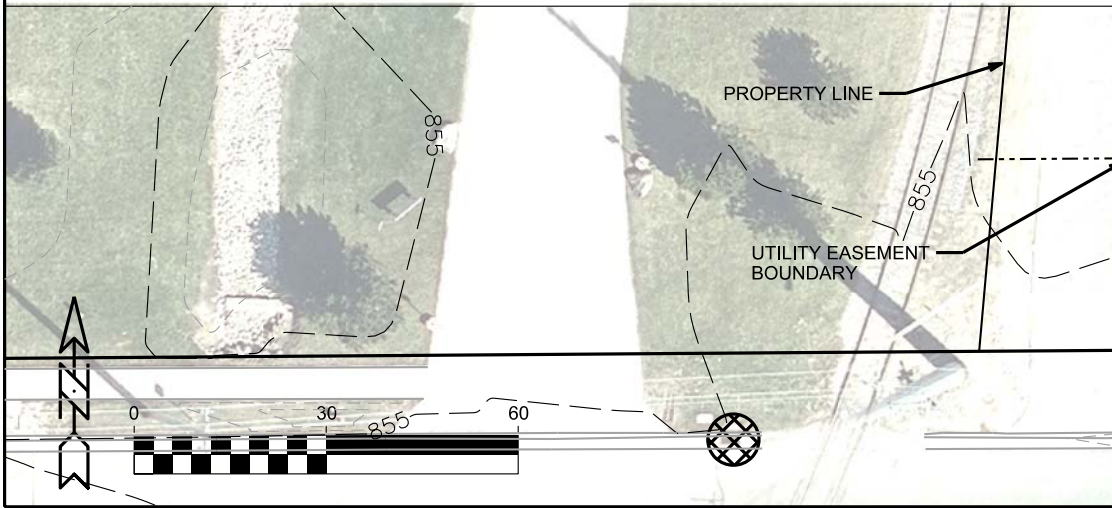
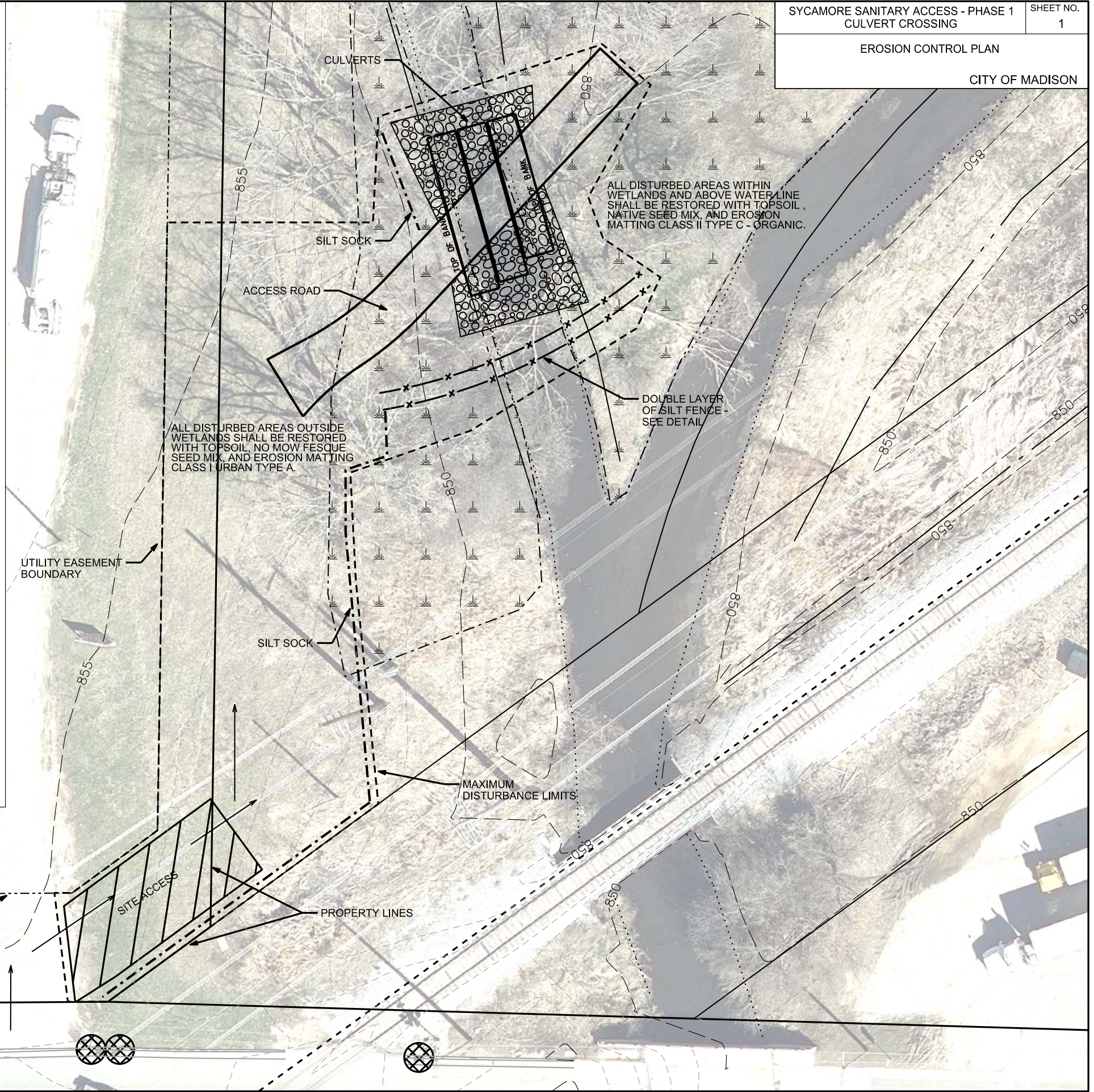
REV. DATE:

ORIGINATOR: CITY OF MADISON, STREETS DIVISION



EROSION CONTROL NOTES:

- 1) SILT CURTAIN AND INLET PROTECTION SHALL BE IN PLACE PRIOR TO ANY OTHER CONSTRUCTION ACTIVITIES.
- 2) THE CONTRACTOR IS RESPONSIBLE FOR THE CONSTRUCTION AND MAINTENANCE OF ALL EROSION CONTROL MEASURES, UNTIL FINAL ACCEPTANCE BY THE CITY OF MADISON.
- 3) THE CONTRACTOR SHALL INSTALL AND MAINTAIN EROSION CONTROL MEASURES IN ACCORDANCE WITH THE WDNR SOC STANDARDS AND CITY OF MADISON STANDARD SPECIFICATIONS.
- 4) THE CONTRACTOR SHALL PROVIDE STREET SWEEPING AS NEEDED ON A DAILY BASIS TO KEEP TRACKING TO A MINIMUM.
- 5) THE CONTRACTOR SHALL BE RESPONSIBLE FOR ALL STORM WATER CONTROL MEASURES NECESSARY WITHIN THE CHANNEL AND ASSOCIATED DRAINAGES.
- 6) THE CONTRACTOR SHALL NOT STOCKPILE MATERIAL OR STORE EQUIPMENT WITHIN THE CHANNEL.
- 7) SILT CURTAIN SHALL BE INSTALLED AS SHOWN IN THE PLAN SET, OR AS DIRECTED BY THE CONSTRUCTION ENGINEER.
- 8) THE CONTRACTOR SHALL EITHER INSTALL SILT SOCK OR SILT FENCE BETWEEN DISTURBED SLOPES AND THE CHANNEL, OR SHALL STABILIZE CHANNEL BANKS ON THE SAME DAY THAT DISTURBANCE OCCURS.
- 9) THE CONTRACTOR SHALL INSTALL SILT SOCK OR SILT FENCE AT THE DIRECTION OF THE CONSTRUCTION ENGINEER.
- 10) ALL EROSION CONTROL MATTING SHALL BE OVERLAPPED IN A MANNER THAT CORRESPONDS WITH THE FLOW DIRECTION IN THE CHANNEL.
- 11) ADDITIONAL INLET PROTECTION MAY BE REQUIRED OUTSIDE THE LIMITS OF THIS SHEET.



PLOT SCALE: _____

PLOT NAME: _____

REV. DATE: _____

ORIGINATOR: CITY OF MADISON, STREETS DIVISION

48" x 76" (1) ELLIPTICAL
STORM SEWER PIPE

53" x 83" (2) ELLIPTICAL
STORM SEWER PIPES

GRADING LIMITS

3:1 SLOPE

2:1 SLOPE

3:1 SLOPE

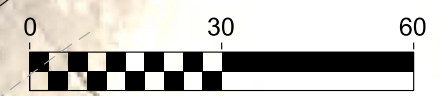
MEDIUM RIPRAP

ACCESS ROAD

GUY

GUY
GUY

PROPERTY LINES

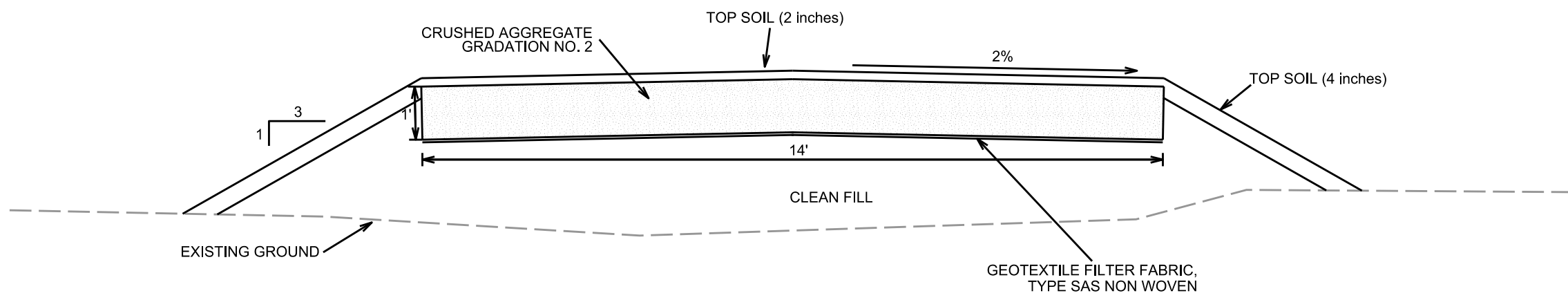
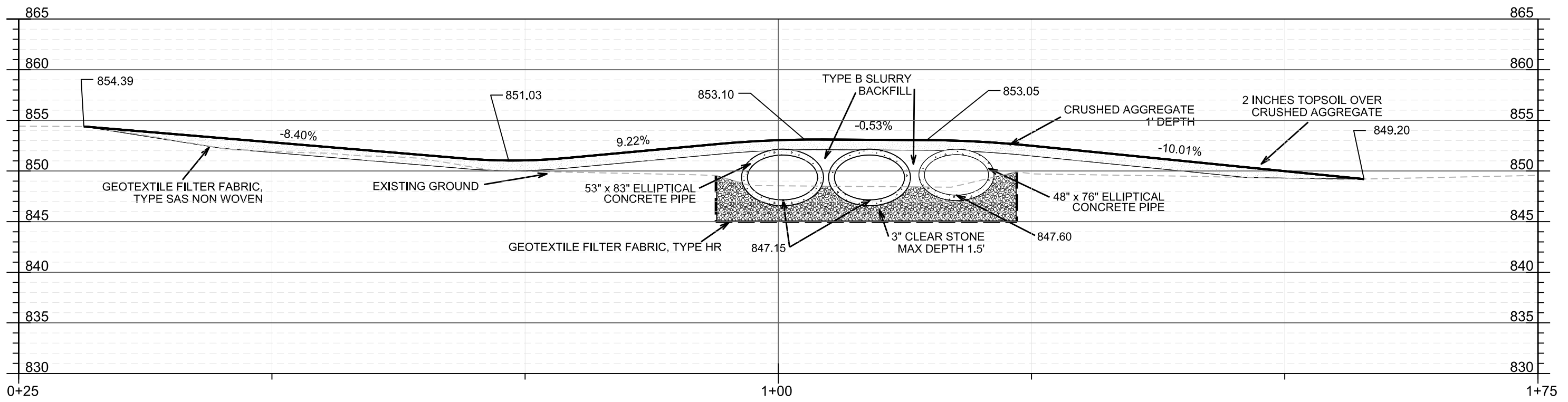


PLOT SCALE: _____

PLOT NAME: _____

REV. DATE: _____

ORIGINATOR: CITY OF MADISON, STREETS DIVISION



PLOT SCALE: _____
 PLOT NAME: _____
 REV. DATE: _____
 ORIGINATOR: CITY OF MADISON, STREETS DIVISION